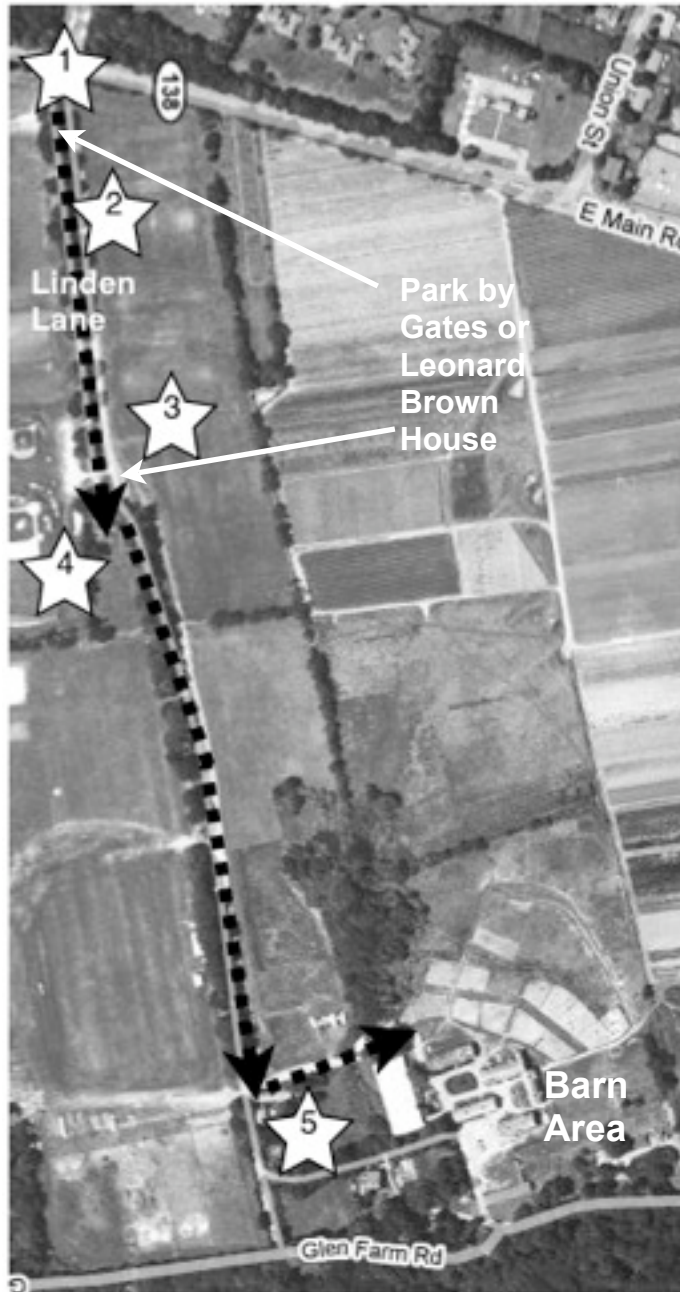


Brown House/Barns Loop
Glen History Trail
History You Can See



1. **Stone Gates:** Set in 1904. Young linden trees were planted to “give the driveway a better effect.” Linden Lane was known as the “drive” and the archway of trees has been damaged during the hurricanes.
2. **Stonewalls:** Aquidneck Island stonewalls feature flat stones. Lower walls are for boundaries. Built by farmers as they cleared their land to plant.
3. **Fields** around Brown House were filled with cows. The herdsman would “stampede” the cows to move them from one field to another. Glen Farm raised Guernseys, Black Aberdeens and White Carolais cows.
4. **Leonard Brown House:** Brown was considered one of the best of Portsmouth farmers. He worked as a wheelwright and blacksmith as well. Home was built in the mid 1800’s.
5. **Red Cross House.** At times it was home to the farm Superintendent. It served as a location for volunteers to roll bandages, etc. during WWII.

Barn Area:

Pump House: Was home to the equipment that pumped water from the stream to supply the farm with water.

Stone Horse Barn: Built in 1911. During World War II the stalls were removed and it was outfitted as a field hospital.

Silo: This stone silo is attached to the stone barn with a stone passageway. It was probably built before 1926. There was a wooden silo, too, but it has been removed.

Stone Cow Barn: Built in 1907, this barn was for dairy cows. This is where the dairy was located.

Stone Bull Barn: There was fire in this barn in 1926.

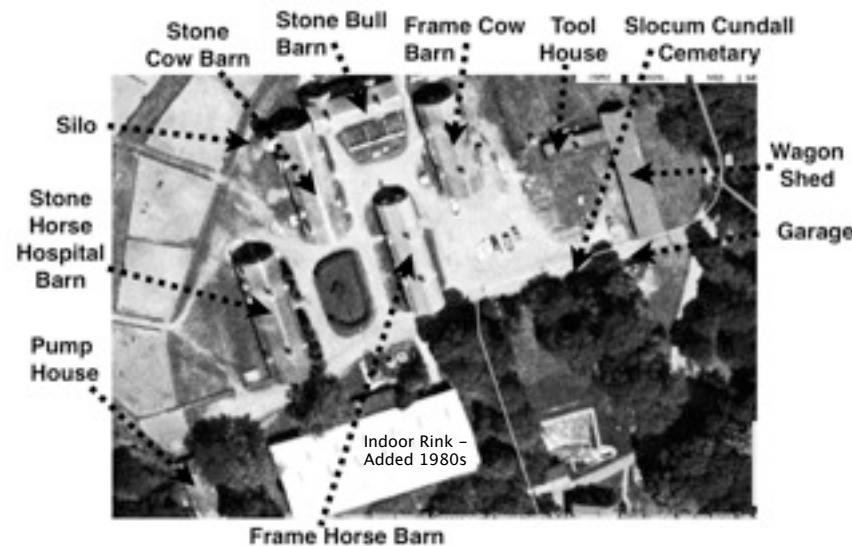
Frame Cow Barn: This was one of the earliest barns and was the model for the rest of the barn complex.

Tool House and Wagon Sheds: Wooden barns built before 1907.

Slocum Cundall Cemetery: Colonial graveyard of Slocum family and the Cundalls who were millers.

Garage: Stone building that housed fire engine and cars before 1925.

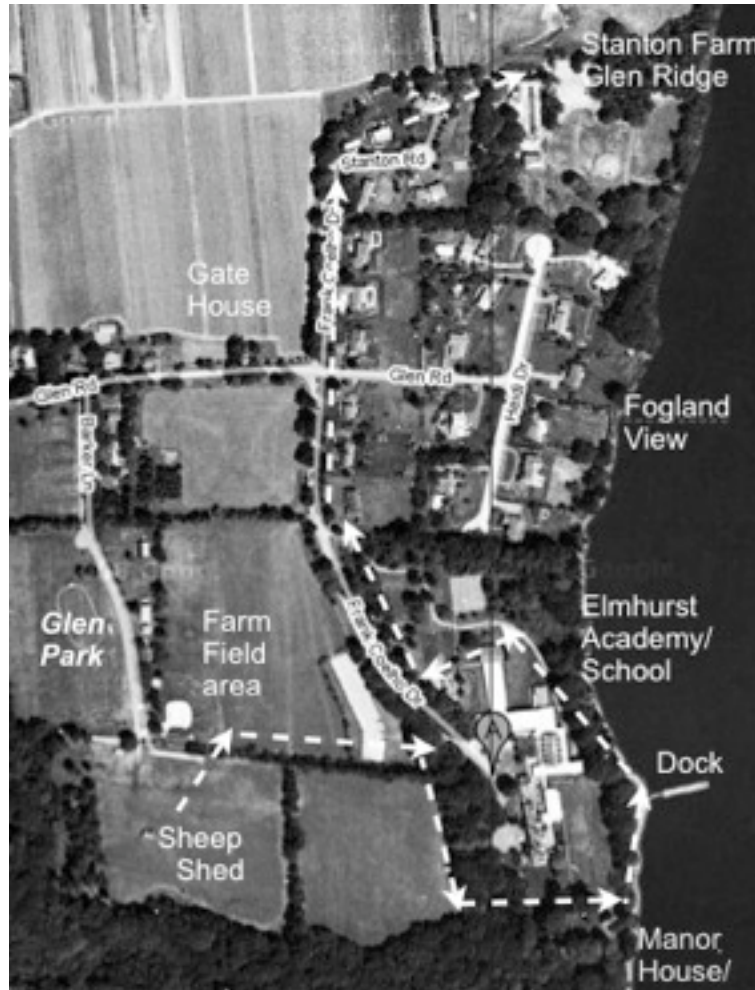
Barn Area



Maps adapted from Google Maps.

Glen Park /Manor House Loop: History You Can See

Park at Glen Park or Elmhurst School Lot. Summer weekdays or early on weekends are best times to go.



I. At Glen Park

- **Sheep Shed Area:** This barn appears on the 1926 map. This area was where the sheep grazed and pigs were kept. The picnic area heads toward the trail that led back to the barn area. There were orchards in this area as well.

- **Farm Field area:** Old maps from the 1920's show this to have poultry sheds.

II Around the Manor House:

- **Glen Manor House** was known as "the big house" by the Glen Farm workers. It was designed by noted architect John Russell Pope and built in the 1920-23 timeframe. The French chateau style may have been picked because the Taylor's son had died near a similar chateau during World War I. The home's location is the same spot Thomas Cooke had a home in the mid 1600's.
- **Garden View:** As you walk around the the grounds and through the woods toward the Sakonet River, you will notice the efforts to restore the marvelous gardens. This woods area was filled with daffodils in April, but most of the gardens were designed to provide the most color during July and August when the Taylors would be in residence. The Olmstead Firm designed the landscaping.

III By the Dock

- **The dock** you see is a newer one constructed after Hurricane Bob (1991) damaged the old one. The original dock had an L shape. The Taylor family had a boat house by the dock where the crew of their yachts would stay.
- **The boat storage structure,** carved into the hillside, can be seen from the dock. There was a skeet shooting range built at the top of the structure.

IV. Path around the School

- **Elmhurst Academy.** As you walk around the school you can see the roof of the chapel of Elmhurst Academy. After his mother died, Reginald Taylor sold the Manor House and 43 acres around it to the Sisters of the Sacred Heart around 1960. They built a girls school for elementary through high school students. Some students boarded at the school and lived in the Manor House.

- The **convent** (place where the nuns had their rooms) was in the wing that juts out toward the river. The teaching sisters lived there, but there were also sisters who were cloistered and lived apart in their own community.
- **Elmhurst Elementary School** began in 1972 when the property was sold to the Town of Portsmouth.

V. At the Corner of Frank Coelho and Glen Road

- Notice the small **Gate House** up Glen Road on the right,. The original gate was taken down when the school buses for Elmhurst Academy could not be driven through it. That gate is now at Belcourt Castle in Newport.
- **Fogland** is the island like shaped land across the river towards Tiverton. There had been a ferry from this area to Tiverton from the 1640's through to the early part of the 1900's. Thomas Cooke and his family had grazing rights to Fogland and would ferry their animals over every day to graze. Hessian soldiers camped out here to guard against American troops crossing during Revolutionary War Times.

VI. Around to the Farm

- **Glen Ridge Alpaca Farm** appears as you follow the road around to the right. It once was called Stanton Farm. There is a very old wooden barn on the property that dates before the Glen Farm era.
- Notice the **barn complex** is a similar style to the Glen barns. The Taylors added the stone barns in 1925 to house their Percheron horses.
- The **silos** is almost identical to one that was by the barns.
- The **garage** housed the Taylor cars and the fire engine for the farm.
- The **beautiful fields** towards the water were a favorite picnic spot for the Taylors

Text by Gloria H. Schmidt - 2009